



# DIGITALART Series

**PORCELAIN**



# Digitalart Series - Colour Based Porcelain (Rectified)

## WHITE



10 x 60 cm (4 x 24)  
SO.DA.WHT.0424.OS



15 x 60 cm (6 x 24)  
SO.DA.WHT.0624.OS



Chip Size: 1.7 x 14.6 cm (0.67 x 5.7)  
Sheet Size: 29.5 x 29.7 cm (11.6 x 11.7)  
SO.DA.WHT.0106.MOS



30 x 60 cm (12 x 24)  
SO.DA.WHT.1224



60 x 60 cm (24 x 24)  
SO.DA.WHT.2424

**All items shown in this document are part of Olympia's stocking program.** For special orders, please contact your Olympia Tile Sales Representative.

# Digitalart Series - Colour Based Porcelain (Rectified)

## ECRU (Light Beige)



10 x 60 cm (4 x 24)  
SO.DA.ECR.0424.OS



Chip Size: 1.7 x 14.6 cm (0.67 x 5.7)  
Sheet Size: 29.5 x 29.7 cm (11.6 x 11.7)  
SO.DA.ECR.0106.MOS



15 x 60 cm (6 x 24)  
SO.DA.ECR.0624.OS



30 x 60 cm (12 x 24)  
SO.DA.ECR.1224



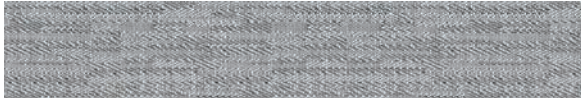
60 x 60 cm (24 x 24)  
SO.DA.ECR.2424

**All items shown in this document are part of Olympia's stocking program.** For special orders, please contact your Olympia Tile Sales Representative.

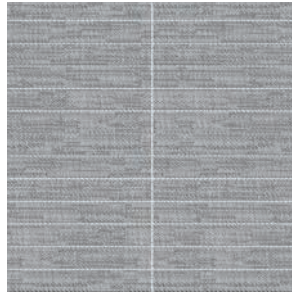


# Digitalart Series - Colour Based Porcelain (Rectified)

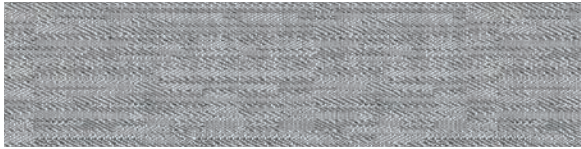
## GREY



10 x 60 cm (4 x 24)  
SO.DA.GRY.0424.OS



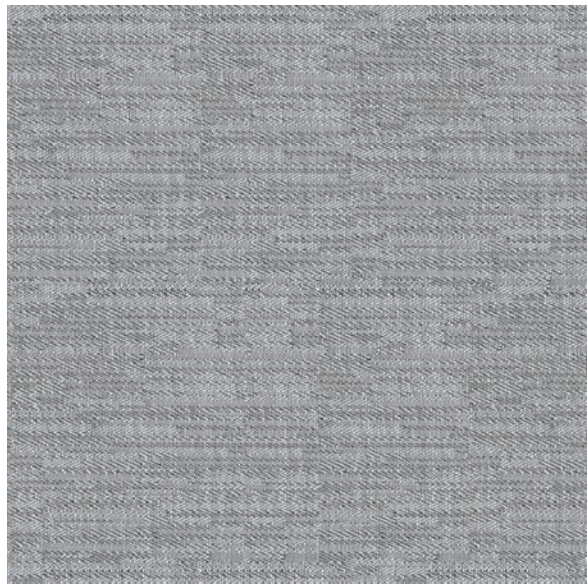
Chip Size: 1.7 x 14.6 cm (0.67 x 5.7)  
Sheet Size: 29.5 x 29.7 cm (11.6 x 11.7)  
SO.DA.GRY.0106.MOS



15 x 60 cm (6 x 24)  
SO.DA.GRY.0624.OS



30 x 60 cm (12 x 24)  
SO.DA.GRY.1224



60 x 60 cm (24 x 24)  
SO.DA.GRY.2424

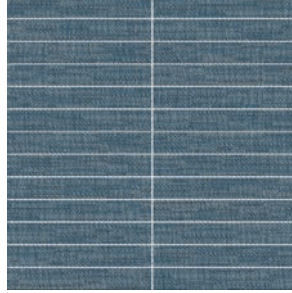
**All items shown in this document are part of Olympia's stocking program.** For special orders, please contact your Olympia Tile Sales Representative.

# Digitalart Series - Colour Based Porcelain (Rectified)

## DENIM



10 x 60 cm (4 x 24)  
SO.DA.DNM.0424.OS



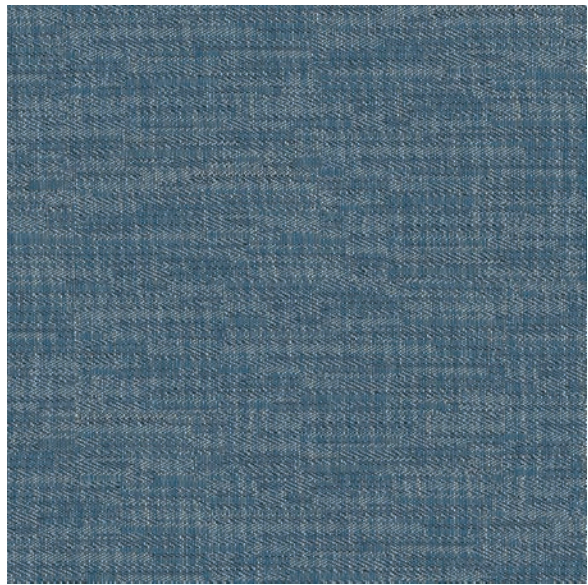
Chip Size: 1.7 x 14.6 cm (0.67 x 5.7)  
Sheet Size: 29.5 x 29.7 cm (11.6 x 11.7)  
SO.DA.DNM.0106.MOS



15 x 60 cm (6 x 24)  
SO.DA.DNM.0624.OS



30 x 60 cm (12 x 24)  
SO.DA.DNM.1224



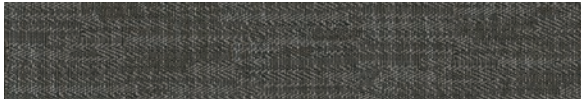
60 x 60 cm (24 x 24)  
SO.DA.DNM.2424

**All items shown in this document are part of Olympia's stocking program.** For special orders, please contact your Olympia Tile Sales Representative.

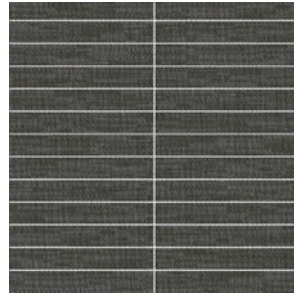


# Digitalart Series - Colour Based Porcelain (Rectified)

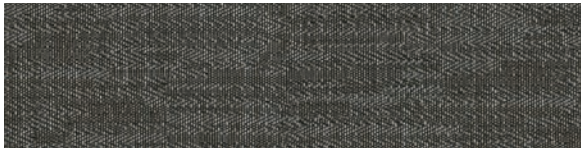
## NIGHT (Anthracite)



10 x 60 cm (4 x 24)  
SO.DA.NHT.0424.OS



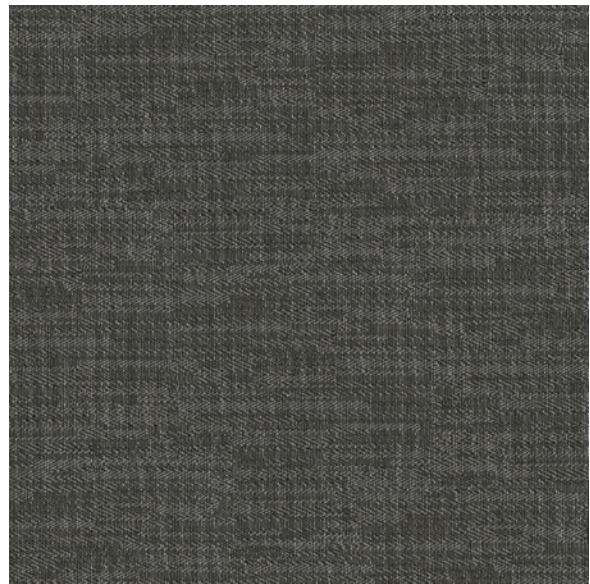
Chip Size: 1.7 x 14.6 cm (0.67 x 5.7)  
Sheet Size: 29.5 x 29.7 cm (11.6 x 11.7)  
SO.DA.NHT.0106.MOS



15 x 60 cm (6 x 24)  
SO.DA.NHT.0624.OS



30 x 60 cm (12 x 24)  
SO.DA.NHT.1224



60 x 60 cm (24 x 24)  
SO.DA.NHT.2424

**All items shown in this document are part of Olympia's stocking program.** For special orders, please contact your Olympia Tile Sales Representative.

# Digitalart Series - Colour Based Porcelain (Rectified)

## MIX COLOURS DECOR



Chip Size: 1.7 x 14.6 cm (0.67 x 5.7)  
Sheet Size: 29.5 x 29.7 cm (11.6 x 11.7)  
SO.DA.MIX.0106.MOS



60 x 60 cm (24 x 24)  
SO.DA.MIX.2424.DC

**All items shown in this document are part of Olympia's stocking program.** For special orders, please contact your Olympia Tile Sales Representative.

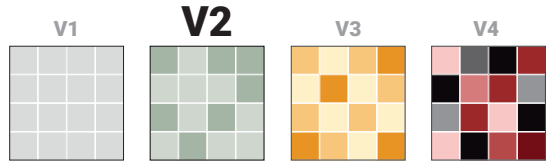
# DIGITALART

# Tests Performed -- Results Conform

Test	Standard Used	Min. Requirements	Results
Water Absorption	ASTM C373	≤ 0.5%	Conforms
Dynamic C.O.F.	ANSI A137.1-2012	≥ 0.42	Conforms
Slip Resistance	DIN 51130/51097	R9	Conforms
Chemical Resistance	ISO 10545-13	min. UB	Conforms
Frost Resistance	ISO 10545-12	Required	Conforms
Stain Resistance	ISO 10545-14	>Class 3	Conforms

Technical data is supplied by the manufacturer and is subject to change at any time. Olympia does not provide warranties as to the specifications of any product.

## Colour Variation



## Member



Member of Canada Green Building Council



Member of U.S. Green Building Council



Ceramic Tile Distributors of America (CTDA)



Marble Institute of America

For information concerning LEED, please contact our Sales Representative

## Examples of Recommended Applications



## Packing Details

TILE SIZE	PC/BOX	SF/BOX	LB/BOX	BOX/PAL
24" x 24" Tile & Decor	4	15.50	70.52	30
12" x 24"	7	13.56	59.57	32
11.6" x 11.7" Sheet	6	5.81	24.18	60
4" x 24"	18	11.62	51.03	48
6" x 24"	14	14	59.56	48



## Recommended FLEX TILE Installation Systems

For other suitable options & complete installation details, visit [www.flextile.net](http://www.flextile.net)

PRODUCT	WALL APPLICATION		FLOOR APPLICATION	
	Interior	Exterior	Interior	Exterior
TILE BOND COAT	<ul style="list-style-type: none"> <li>• 56SR Full Coverage LHT</li> <li>• 66 FlexLite</li> </ul>	<ul style="list-style-type: none"> <li>• 51/44 Two-Component</li> <li>• 5400 Maxi-Flex</li> </ul>	<ul style="list-style-type: none"> <li>• 56SR Full Coverage LHT</li> <li>• 61 Full Coverage LHT</li> <li>• 62 Full Coverage LHT</li> </ul>	<ul style="list-style-type: none"> <li>• 51/44 Two-Component</li> <li>• 5400 Maxi-Flex</li> <li>• 58XT Fast Set System</li> </ul>
GROUT	<ul style="list-style-type: none"> <li>• 500 PM Unsanded</li> <li>• 600 PM Sanded</li> <li>• 1600 RSG Fast Set</li> <li>• ColourMax Plus Quartz</li> </ul>	<ul style="list-style-type: none"> <li>• 600 PM Sanded</li> <li>• 1600 RSG Fast Set</li> </ul>	<ul style="list-style-type: none"> <li>• 600 PM Sanded</li> <li>• 1600 RSG PM Sanded</li> <li>• ColourMax Plus Quartz</li> </ul>	<ul style="list-style-type: none"> <li>• 600 PM Sanded</li> <li>• 1600 RSG PM Sanded</li> </ul>
CAULKING	Ultra Performance Hybrid Caulk (colour-matched to grout)	Ultra Performance Hybrid Caulk (colour-matched to grout)	Ultra Performance Hybrid Caulk (colour-matched to grout)	Ultra Performance Hybrid Caulk (colour-matched to grout)

### SURFACE PREPARATION (If Required)

- **Floor levelling:** 59 Flex Flo / 5900 Flex Flo Plus Self Levelling Underlayment
- **Waterproofing:** WP900 Waterproof Membrane
- **Crack Isolation/Uncoupling:** Flexilastic 1000 Crack Isolation Membrane / FlexMat Uncoupling Membrane

\*For a complete listing of FLEX TILE products and accessories including Sound Control, In-Floor Heating, and further setting options, please visit [www.flextile.net](http://www.flextile.net)



## “MORE” Surface Care Product Guide

Task	Product Recommendation	Dilution with Water	Frequency
Grout Sealing	MORE™ Grout, Ceramic & Porcelain Sealer	Ready to use	Commercial: 1-3 Years Residential: 5-8 Years
Daily Maintenance	MORE™ Stone and Tile Cleaner	1 : 128 Ratio	Daily
Deep Cleaning	MORE™ Alkaline Cleaner	1 : 4 Ratio	As Needed
Grout Haze- Cementitious	MORE™ Acidic Cleaner	1 : 4 Ratio	As Needed
Grout Haze - Epoxy / Urethane	MORE™ Coating Stripper*	Ready to use	As Needed

\*Always test in an inconspicuous area to make sure the product is achieving the desired results and is not damaging the finish of the surface.





Wall: MIX COLOURS DECOR  
Floor: GREY



DENIM, ECRU (Light Beige), GREY, NIGHT (Anthracite), WHITE





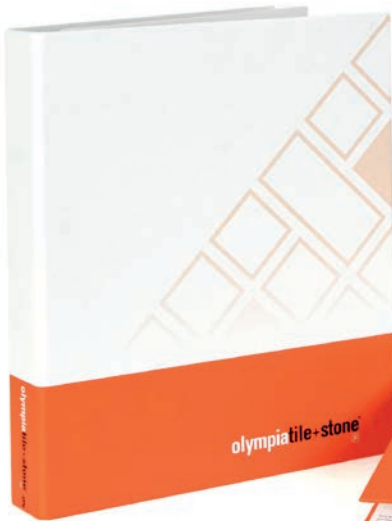
ECRU (Light Beige) & GREY



ECRU (Light Beige) & WHITE



# DIGITALART SERIES: FL - 739 / F-137



Colour may vary slightly from images shown. It is highly recommended to view physical samples of tile prior to purchase. Note that shade variations between tiles is characteristic and adds to the inherent beauty of the product. Please visit a showroom near you or request a sample from your Olympia Tile Sales Representative.

It is Olympia Tile's policy to stock all items for sale. Should you require additional sizes, finishes or colours, Olympia has a Special Order Department to help find exactly what you are looking for. Please contact your Olympia Tile Sales Representative for more details. Note that minimum order quantities and longer lead times apply to all special order items.

## OLYMPIA TILE + STONE INTERNATIONAL INC.

<b>CORPORATE OFFICE AND SHOWROOM TORONTO</b> 1000 Lawrence Ave. West Ontario M6A 1C6 T: 416 785 6666 Toll Free: 1 800 268 1613 F: 416 785 9682	<b>VANCOUVER</b> 2350 Willingdon Ave. Burnaby British Columbia V5C 5J6 T: 604 294 2244 Toll Free: 1 800 663 9441 F: 604 294 0528	<b>EDMONTON</b> 11540 - 163rd Street Alberta T5M 3T3 T: 780 452 5050 Toll Free: 1 800 619 4438 F: 780 451 4391	<b>WINDSOR</b> 4145 7th Concession Rd Ontario N9A 6J3 T: 519 966 2500 Toll Free: 1 877 410 5953 F: 519 969 2407	<b>HAMILTON</b> 75 Milburn Road Ontario L8E 3A3 T: 905 560 5520 Toll Free: 1 800 263 1370 F: 905 578 3593	<b>MONTREAL</b> 555 rue Locke Ville St-Laurent, Quebec H4T 1X7 T: 514 345 8666 Toll Free: 1 800 361 1954 F: 514 345 8825	<b>HALIFAX</b> 55 Akerley Boulevard Dartmouth, Nova Scotia B3B 1M3 T: 902 468 9260 Toll Free: 1 800 565 7790 F: 902 468 0011
<b>VAUGHAN</b> 100A Royal Group Crescent Ontario L4H 1X9 T: 905 266 0420 F: 905 266 0423	<b>CALGARY</b> 3308 - 11th Street S.E. Alberta T2G 3G8 T: 403 287 1070 Toll Free: 1 800 322 8182 F: 403 243 1888	<b>WINNIPEG</b> 560 Sheppard Street Manitoba R2X 2P8 T: 204 633 5736 Toll Free: 1 800 665 8017 F: 204 632 4644	<b>LONDON</b> 234 Exeter Road Ontario N6L 1A3 T: 519 652 5011 Toll Free: 1 800 265 4690 F: 519 652 5021	<b>OTTAWA</b> 2480 Don Reid Drive Ontario K1H 1E1 T: 613 736 9570 Toll Free: 1 800 267 1864 F: 613 736 9563	<b>QUEBEC</b> 2405 rue Watt Quebec G1P 3X2 T: 418 657 5557 Toll Free: 1 800 463 5516 F: 418 657 6708	

## SLAB DIVISION

### TORONTO

22 Dufflaw Road | Toronto | Ontario | M6A 2W1  
 T: 416 785 9555 ext 320 | F: 416 781 4521

### VAUGHAN

100A Royal Group Crescent | Vaughan | Ontario | L4H 1X9  
 T: 905 266 0420 | F: 905 266 0423

## OLYMPIA TILE (USA), INC.

<b>CORPORATE OFFICE</b> 701 Berkshire Lane North Minneapolis (Plymouth) Minnesota 55441 T: 763 545 5455 F: 763 542 9830	<b>IOWA</b> <b>KATE-LO TILE &amp; STONE</b> 4251 N.W. Urbandale Dr. Des Moines (Urbandale) Iowa 50322 T: 515 270 4920 Toll Free: 1 800 320 1387 F: 515 270 7035	2780 Enterprise Ct. <b>Saginaw, Michigan 48603</b> T: 989 790 5851 Toll Free: 1 800 797 0897 F: 989 790 0311	3201 West County Rd. 42 Suite 110 <b>Burnsville, Minnesota 55306</b> T: 952 890 4324 Toll Free: 1 800 288 3026 F: 952 890 4402	<b>NEW JERSEY</b> <b>NEW JERSEY TILE &amp; STONE</b> 70 Newfield Avenue Raritan Center, <b>Edison</b> New Jersey 08837 T: 732 512 1818 Toll Free: 1 800 513 8453 F: 732 512 1881	<b>OREGON</b> <b>THOMPSON TILE &amp; STONE</b> 4472 NW Yeon Avenue <b>Portland</b> Oregon 97210 T: 971 803 7552 Toll Free: 1 800 827 4092 F: 503 222 0731	711 S. Fidalgo Street <b>Seattle</b> Washington 98108 T: 206 900 7331 Toll Free: 1 800 827 4093 F: 206 294 5933
<b>FLORIDA</b> <b>ALPHA TILE &amp; STONE</b> 2443 East Meadow Blvd. Tampa, Florida 33619 T: 813 620 9000 Toll Free: 1 800 785 9000 F: 813 621 0606	<b>NORTH DAKOTA</b> <b>KATE-LO TILE &amp; STONE</b> <b>Resource Centre</b> 300 Northern Pacific Ave. Suite 106 <b>Fargo, North Dakota 58102</b> T: 701 478 8087 F: 701 478 8084	13085 23 Mile Rd. <b>Detroit East (Shelby Township)</b> Michigan 48315 T: 586 991 0780 Toll Free: 1 800 889 5395 F: 586 991 0784	1911 West County Rd. 'C' <b>St. Paul (Roseville)</b> Minnesota 55113 T: 651 730 1975 Toll Free: 1 800 288 3026 F: 651 730 2013	<b>NEW YORK</b> <b>DOBKIN TILE &amp; STONE</b> 51 Benbro Drive <b>Buffalo (Cheektowaga)</b> New York 14225 T: 716 684 1200 Toll Free: 1 800 759 1414 F: 716 684 1294	<b>WISCONSIN</b> <b>LEXCO TILE &amp; STONE</b> 1616 S. 108th Street <b>Milwaukee</b> Wisconsin 53214 T: 414 771 2900 Toll Free: 1 800-242-2249 F: 414 771 9153	575 Strander Blvd. <b>Tukwila</b> Washington 98188 T: 206 900 7331
10898-A Metro Parkway <b>Fort Myers, Florida 33966</b> T: 239 275 8288 Toll Free: 1 800 785 8288 F: 239 275 0116	<b>MICHIGAN</b> <b>BEAVER TILE &amp; STONE</b> 24700 Drake Rd. <b>Detroit West (Farmington Hills)</b> Michigan 48335 T: 248 476 2333 Toll Free: 1 800 825 0551 F: 248 476 4636	1694 Gezon Parkway <b>Grand Rapids, (Wyoming)</b> Michigan 49509 T: 616 534 2883 Toll Free: 1 800 797 0727 F: 616 534 4784	171 Cheshire Lane N Suite 100 <b>Plymouth</b> Minnesota 55441 T: 763 450 3636 F: 763 450 3637	48 Railroad Avenue <b>Albany (Colonie)</b> New York 12205 T: 518 489 6803 Toll Free: 1 800 678 5769 F: 518 489 6806	<b>WASHINGTON</b> <b>THOMPSON TILE &amp; STONE</b> 3900 East Alki <b>Spokane</b> Washington 99208 T: 509 535 2925 Toll Free: 1 800 827 2555 F: 509 534 5218	
2603 Ace Road <b>Orlando, Florida 32804</b> T: 407 293 3993 Toll Free: 1 800 785 3993 F: 407 293 1779	1700 Stutz Dr., Suite 101 <b>Detroit North (Troy)</b> Michigan 48084 T: 248 649 5552 F: 248 649 0741	<b>MINNESOTA</b> <b>KATE-LO TILE &amp; STONE</b> 701 Berkshire Lane North <b>Minneapolis (Plymouth)</b> Minnesota 55441 T: 763 545 5455 Toll Free: 1 800 288 3026 F: 763 542 9830	<b>NEBRASKA</b> <b>KATE-LO TILE &amp; STONE</b> 13211 Chandler Road Suite 400 <b>Omaha (La Vista)</b> Nebraska 68138 T: 402 614 9010 Toll Free: 1 877 687 6636 F: 402 614 0989			

**FLEXTILE LTD.**  
**MANUFACTURING PLANTS**  
[www.flextile.net](http://www.flextile.net)

### TORONTO

121 30th Street | Toronto  
 Ontario | M8W 3C1  
 T: 416 255-1111 | Toll Free: 1 800 699 3623  
 F: 416 255-1729

### MONTREAL

555 rue Locke | Ville St-Laurent  
 Quebec | H4T 1X7  
 T: 514 788-3120 | Toll Free: 1 800 361 1954  
 F: 514 345-8825

### VANCOUVER

2829 Lake City Way | Burnaby  
 British Columbia | V5A 2Z6  
 T: 604 420-4914 | Toll Free: 1 888 236 4486  
 F: 604 420-0936

All sales and transactions are subject to our terms and conditions of sale, available on our website.

**olympiatile+stone**